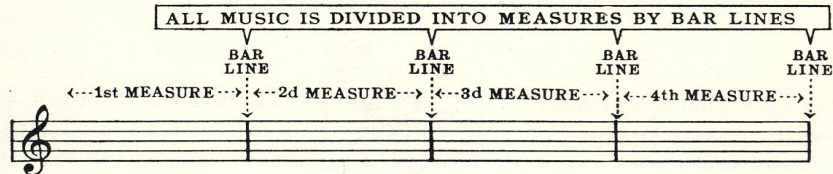


# 

9

### 



### 

The numbers shown at the beginning of a piece are called the TIME SIGNATURE and tell us how to count the time.

The **TOP** number tells how many COUNTS in each MEASURE

The **BOTTOM** number tells what kind of a note gets one COUNT.

TWO COUNTS to each MEASURE

THREE COUNTS to each MEASURE

FOUR COUNTS to each MEASURE

2  
4

3  
4

4  
4

A QUARTER NOTE (♩) gets one COUNT

## 



THREE FOUR TIME  
3 COUNTS to each MEASURE

F. SCHUBERT

OPEN 3 CLOSE OPEN 5 3

TAP TAP TAP TAP TAP TAP TAP etc.

CLOSE 5 3 OPEN CLOSE

OPEN 3 1 CLOSE OPEN

CLOSE OPEN 5 3 CLOSE 5 3

OPEN CLOSE OPEN 5 3

The DOTTED HALF NOTE (♩.) is held for 3 COUNTS.

Teachers Note: The SEDLON NOTE SPELLER is recommended at this time to promote the rapid assimilation of the elements of notation and time division by the use of Charts, Games and Drills.