

ACCORDION LESSONS – LESSON 28

24

The Muffin Man

Play this Warm-Up several times daily. Be sure to sound both notes together.

Oh, do you know the muf - fin man, the muf - fin man, the muf - fin man, Oh,
do you know the muf - fin man who lives in Dru - ry Lane? Yes, oh
yes, I know the muf - fin man, the muf - fin man, the muf - fin man, Oh,
yes, I know the muf - fin man who lives in Dru - ry Lane.

REPEAT Sign-means to repeat from the beginning.

Tonal Contrast

Always remember that CONTRAST is the first law of art.

Contrast in music may be achieved by varying the volume from soft to loud or vice versa.

In the following piece observe the expression marks carefully.

p (Soft) *f* (Loud) *p* (Soft)
Means gradually louder Means gradually softer

Black Hawk Waltz

Gracefully, in medium tempo (time)

M. E. WALSH

p *f* *p*
CM GM

Recite the names and number of counts of the RESTS below.
(Refer to the REST Chart shown on page 23 for verification.)

Fig. 10. 100 per cent verticalization.

Finish the sentences below. Check the answers on page 21.

A Flat sign shown at the beginning of a piece means that the piece is played in the Key Signature of and all’s are played Flat throughout.

Recite the letter names of the following basses. Refer to pages 9 and 22.

* From the start, read Bass notes as they appear in Treble Clef, then count up two letter names.

For example: A in Treble Clef becomes C in Bass Clef.

NEXT PAGE IS THE ANSWERS:

QUICKIE QUIZ

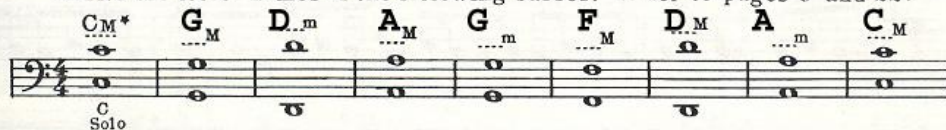
Recite the names and number of counts of the RESTS below.
(Refer to the REST Chart shown on page 23 for verification.)

1 2 4 1 4 2 1 2 4

Finish the sentences below. Check the answers on page 21.

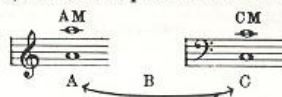
A Flat sign shown at the beginning of a piece means that the piece is played in the Key Signature of **F** and all **B**'s are played Flat throughout.

Recite the letter names of the following basses. Refer to pages 9 and 22.



* From the start, read Bass notes as they appear in Treble Clef, then count up two letter names.

For example: A in Treble Clef becomes C in Bass Clef.



Names of Rests: Quarter Half Whole Quarter Whole Half Quarter Half Whole