

32

NOTE - READING HINTS: Train the eye to read well ahead of the notes actually being played. Avoid breaks by playing **SLOWLY** at first to prevent the hands from "catching up" with the eye. The eyes should act like the headlights of a car at night, preparing the driver in advance for the turns and bumps on the road ahead.

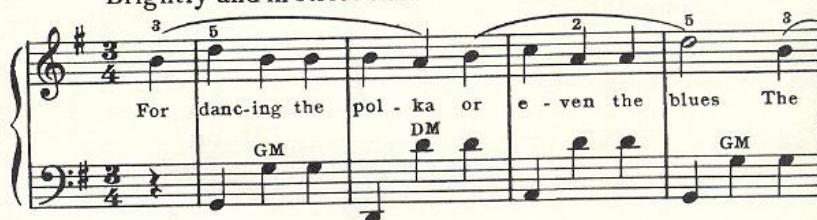
Warm-Up in F Major



Clog Dance

Brightly and in strict time

Folk Dance



Moonlit Shadows

33

Traditional

Smoothly

C D E F G A B C D E

Waltz me 'round and hold me tight; Let's dance un -

CM CM FM

C D E F G A B C D E F

til the stars are bright; And then let's waltz once a - gain.

FM FM GM CM

5 2 1 2 3 4

While moon-beams play, far in - to the night.

GM CM GM CM CM

(G)

Warm-Up Including the New Notes E and F

Recite the letter names of the following notes, then play.

1 1 2 4 2 1 3 4 1 1

2 2 2 2 1 3 3 5 4 3 1

4 2 3 1 1 3 2 1 3 1 4 2 3 1 3 5 4