

ACCORDION LESSONS – LESSON 37

31 42

Building the B \flat MAJOR SCALE

Note that E is also flatted, maintaining the HALF-STEP in the first TETRACHORD.

The B \flat MAJOR SCALE

First TETRACHORD: A B C D (Whole, Whole, Half steps)

Second TETRACHORD: E F G A (Whole, Whole, Half steps)

Whole STEP between the TETRACHORDS.

The B \flat Major Scale

(Memorize)

Play several times daily.

Slumber Song

JOHANNES BRAHMS

Slowly

mp (medium soft)

SCALE of B \flat MAJOR

The Bflat Major Chord: 1st-Bflat 3rd-D 5th-F notes of the scale. Use these 3 notes to add harmony to a note when CM is played on the left hand.

The Galway Piper (Warm-Up)

Traditional

Play several times daily, observing strict tempo throughout.



mf

Nonesuch Song

(Warm Up)

mf

QUICKIE QUIZ

Recite the letter names of the following bass notes: *

FM M m M M m M

F Solo

Recite letter names of the following notes, then play.

CM

* From the start, read Bass notes as they appear in Treble Clef, then count up two letter names.

For example: D in Treble Clef becomes F in Bass Clef.

DM FM

D E F

EXTRA REVIEW MATERIAL:

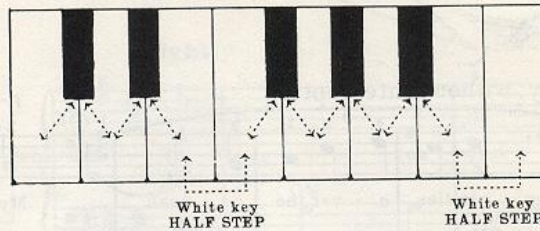
30

28

HALF STEPS and WHOLE STEPS

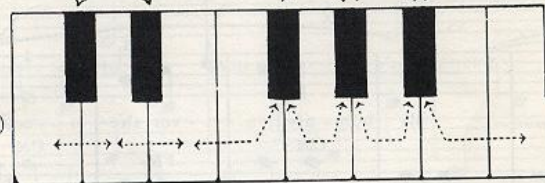
A HALF STEP is the distance between any treble key and the next nearest key up or down, black or white.

Progression in
HALF STEPS
(No key between)



A WHOLE STEP is made up of two HALF STEPS.

Progression in
WHOLE STEPS
(One key in between)

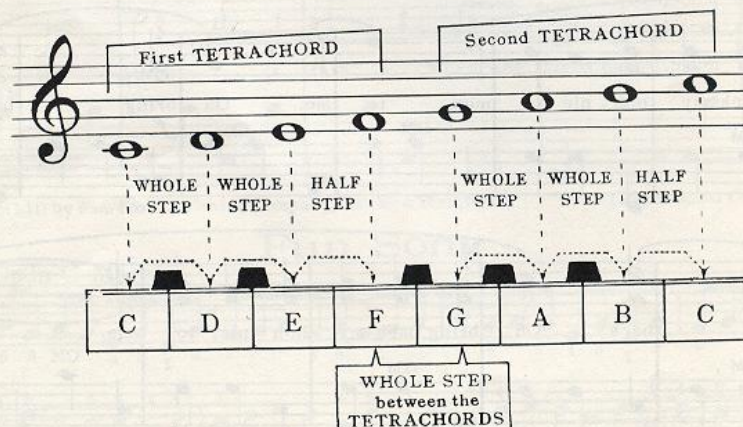


Building the MAJOR SCALE

The MAJOR SCALE is made up of eight tones in alphabetical order.

As shown below, the MAJOR SCALE is composed of two, similar four note groups called TETRACHORDS, each TETRACHORD having the same pattern; WHOLE STEP-WHOLE STEP-HALF STEP.

The
C MAJOR
SCALE



The C Major Chord: 1st-C 3rd-E 5th-G notes of the scale. Use these 3 notes to add harmony to a note when CM is played on the left hand.

33

Building the F MAJOR SCALE

Note that B is flatted to maintain the HALF-STEP in the first TETRACHORD.

The F MAJOR SCALE

The F Major Scale
(Memorize)

Warm-Up in F Major

The F Major Chord: 1st-F 3rd-A 5th-C notes of the scale. Use these 3 notes to add harmony to a note when FM is played on the left hand.

42

Building the B \flat MAJOR SCALE

Note that E is also flatted, maintaining the HALF-STEP in the first TETRACHORD.

The B \flat MAJOR SCALE

The B \flat Major Scale
(Memorize)

Play several times daily.

The G Major Chord: 1st-G 3rd-B 5th-D notes of the scale. Use these 3 notes to add harmony to a note when GM is played on the left hand.